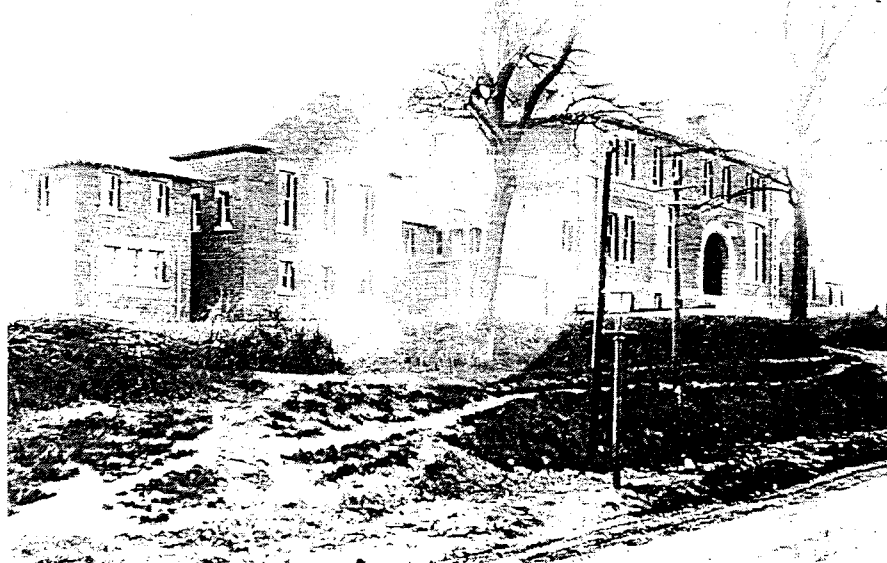




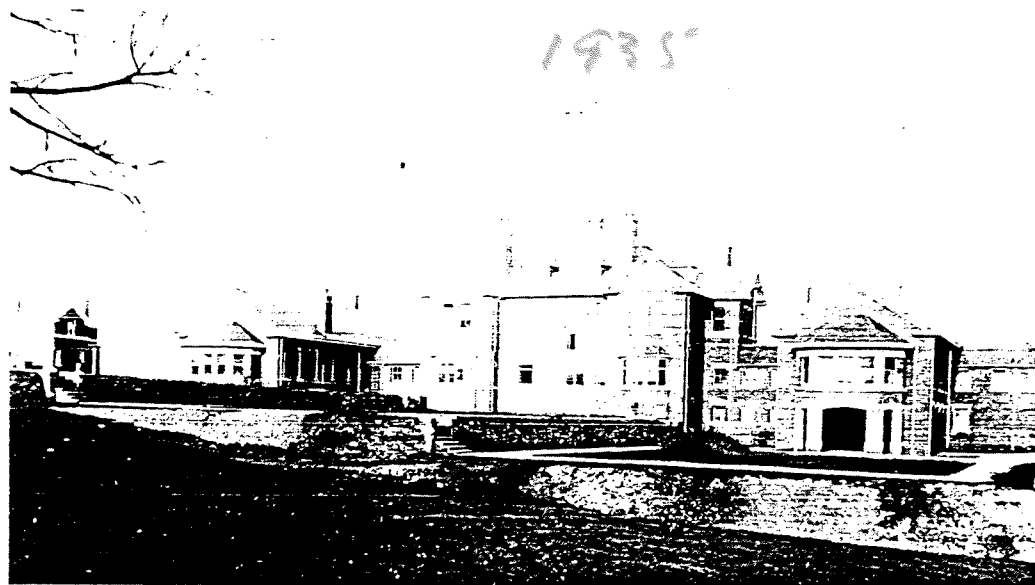
1985

15



The General Hospital from the Rothwell Road. The hospital was built of stone in 1896 at a cost of £18,101, and was officially opened on the 12th November 1897 by the Rt. Hon. C. R. Spencer on behalf of the Earl Spencer. The five acre site was given by the Duke of Buccleuch, and a ward in the present hospital still bears his name.

A view of the rear of the hospital. Both this photograph and the one above were taken in 1897. The hospital was built to the design of Messrs. Gotch & Saunders, Architects. At this time accommodation was limited to eighteen adult patients and four children.



An aerial view of the added Spencer and Buccleuch wards. The Foundation Stone for these extensions was laid by the Lady Lilford on November 2nd 1901. The wards were opened on December 6th 1902, increasing the number of beds available to fifty eight.