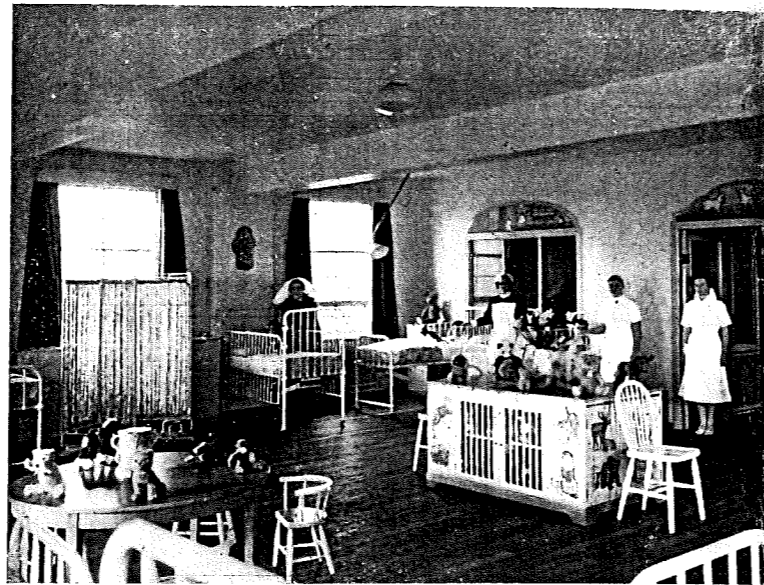


# Extension to Kettering Hospital

Architect: H. P. Surridge, L.R.I.B.A.

A View of the Children's Ward in the new Cave Block.



[Photo by courtesy of "Kettering Leader and Guardian."]

**K**ETTERING is fortunate in having had a benefactor of the name of Walter Cave, who died on May 11, 1938, and left nearly £12,000 to the hospital. It is this legacy which greatly helped in making possible the construction of the new wing of the Kettering and District General Hospital, and as a consequence it was decided to call it the Cave Block. Built during 1940 at a cost of £25,000 it was formally opened by the Duchess of Gloucester in January 1941.

## The Building

The building is 135 ft. long by 35 ft. with a short annexe connecting it to the existing hospital. It lies to the east of the original building and includes provision for accident cases, out-patient, sunlight and massage treatment and quarters for domestic staff as well as a children's unit and X-ray department. There are three floors and a basement, the roof being flat and constructed to withstand incendiary bombs. The building is steel framed, filled with 11 in. hollow brick walls, the brick facings being of a tone to harmonise with the original stone of the institution. Fireproofing features are incorporated, the staircase being of stone, while there is an outside emergency iron staircase from the upper floors at the south end of the building. The three balconies on the first floor, which help to break up the regularity of the design on the main elevations on the north and west, are purely architectural features and are not used—except by the window cleaners. There is, however, a solarium on the south end of the Children's Ward on the first floor.

## Top Floor

The top floor accommodates 35 domestic staff. There are single and double bedrooms and a recreation room with a southern aspect, the colour scheme being orange and green. Most of the rooms have built-in wardrobes, and there is a large sitting room and recreation room which has a large fitted bookcase and wireless set, and is furnished with Lloyd Loom furniture.

## First Floor

On the first floor there is the children's unit with wards for 25 children. There are six children's wards, varying in size to accommodate from one to twelve children, with complete supervision to all, from the sister's room, by means of large glazed panels. The decorations are cream generally with pale pink woodwork, and decorated friezes illustrating nursery rhymes, etc., which are removable when decorating is necessary. A novel feature of the main children's ward is a "cage" decorated with pictures of Zoo animals, containing dozens of woolly wild animals.

There is also in the children's ward an ingenious device by which a tell-tale lamp glows to warn the staff member responsible should a drug cupboard be inadvertently left open.

The service rooms connected with the children's wards consist of sister's room, steriliser and sluice, two bathrooms, two W.C.'s., linen room and kitchen. The kitchen is fitted with an H.M.V. refrigerator and special cupboards for babies' food and bottles, as well as for fresh fruit. The walls of the steriliser, sluice, bathrooms and kitchen are tiled in cream, dado height and the sluice is fitted with a bed pan washer.

The first floor also houses an up to date X-ray Department which now has more roomy quarters than formerly.

## Ground Floor

The ground floor is divided into casualty department, electrical, massage and sunlight departments and out-patient department. Of these the electrical, massage and sunlight departments were formerly housed in a wooden hut. The casualty department is self-contained and has two casualty rooms with sterilising plant between and a recovery room adjoining.

Comfortable tubular steel chairs are provided in the waiting room on the ground floor, with a small number of armchairs, also of tubular steel, for any patients who might have to wait longer than usual. In addition there are small tables provided with periodicals.

## THE HOSPITAL, August 1941

173

The massage department is divided into cubicles by curtains, and in addition to the ordinary apparatus there is short wave diathermy and a medical gymnasium. The sunlight department is equipped with a Kromayer lamp.

## The Basement

The basement consists of store rooms, for crockery, dressings, splints, mattresses, records and cleaning materials, calorifier room, mortuary, and a roomy garage for staff cars. The mortuary is fitted with a six compartment cooling unit. There is a mortuary chapel with a small altar table, etc. A stained glass window has been presented but this has been packed away in a place of safety till after the war, and the window has been glazed meanwhile in the ordinary way.

## General Features

One point of particular interest about the new block is the large number of doors, the most important rooms having more than one entrance and exit; this has been found most convenient and time saving.



[Photo by courtesy of "Kettering Leader and Guardian."]

There is an electric lift, large enough to take a bed, to all the floors.

The heating is by hot water from the central plant, through steam heated calorifiers. All the departments and ward kitchens are fitted with Stott's steam heated water boilers.

The light is direct, and Swedish adjustable lamp fittings in the larger wards replace the ordinary bed headlights, one fitting being sufficient for three beds.

The windows are Hope's steel hospital type, and the doors are flush.

The decorative friezes in the children's ward, referred to above, as well as the whole of the furniture, were chosen and presented to the Hospital by Mrs. A. G. Timpson (a member of the Board of Management) in memory of her parents.

*General Contractors*—Messrs. A. P. Lewis and Sons, Ltd.; *Sub-Contractors, Heating*—Messrs. S. Booth Horrocks, Ltd.; *Lighting*—Battery Services, Ltd.; *Plumbing and Decorating*—Messrs. A. G. Miller, Ltd.; *Cooling Unit*—Messrs. Pressed Steel Co., Ltd.; *Lift*—Messrs. Waygood Otis, Ltd.; *Children's Ward Furniture*—Messrs. Furdecor, Ltd.; *Tubular Steel Chairs*—Messrs. Pel, Ltd.; *Bed Pan Washer*—Messrs. Dent and Hellyer, Ltd.; *Floors—Children's Block Corridor*—Runnymede Rubber Co.; *Main Corridor, X-Ray Department and Waiting Room, Out-Patient Department and Entrance*—The North British Rubber Co., Ltd.; *Beds and Cots*—supplied by Messrs. Furdecor, Ltd., Manufactured by Whitfields; *Casualty Department Sterilising Plant*—Messrs. Albert Browne, Ltd.; *Electro-Therapeutic Unit, Infra Red, Radiant Heat, and Ultra Violet Lamps*—Philips Lamps, Ltd.; *Medical Gymnastic Apparatus*—Messrs. Spencer Heath and George, Ltd.

The Domestic Staff Recreation and Sitting Room.

## Economy Labels on Used Envelopes

OUR attention has been drawn to the fact that economy labels may not be used on envelopes addressed to places outside Great Britain. A correspondent writes to tell us that his hospital recently had one addressed to Northern Ireland returned by the Censor.

## A Correction— The Laundering of Woollens

The temperatures given in the washing formula on page 149 of our July issue should all read *deg. F.* and not *deg. C.*

## I.A.H.O. Associateship Examinations

### Tutorial Courses

Tutorial Guidance Courses for both the Final and Intermediate Examinations are due to commence at the beginning of September, and students desiring to enrol should apply to the Secretary for an Enrolment Form without delay. All applications should be sent in by August 30. Further particulars will be found on p. 164 of THE HOSPITAL for July 1941.

The results of the examinations held in May last will be announced very shortly.