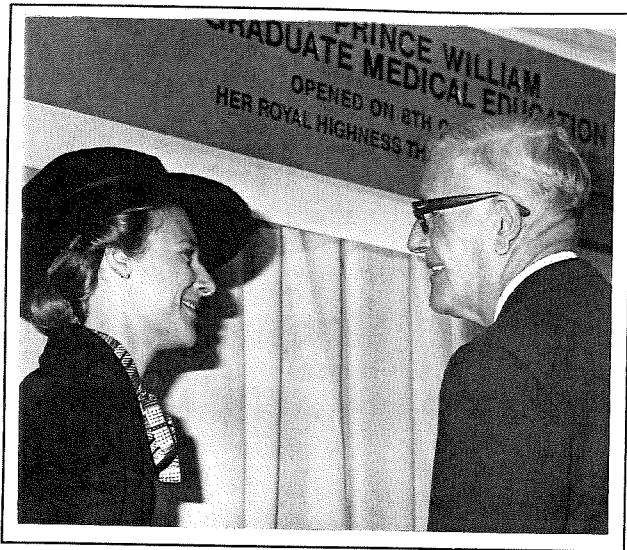


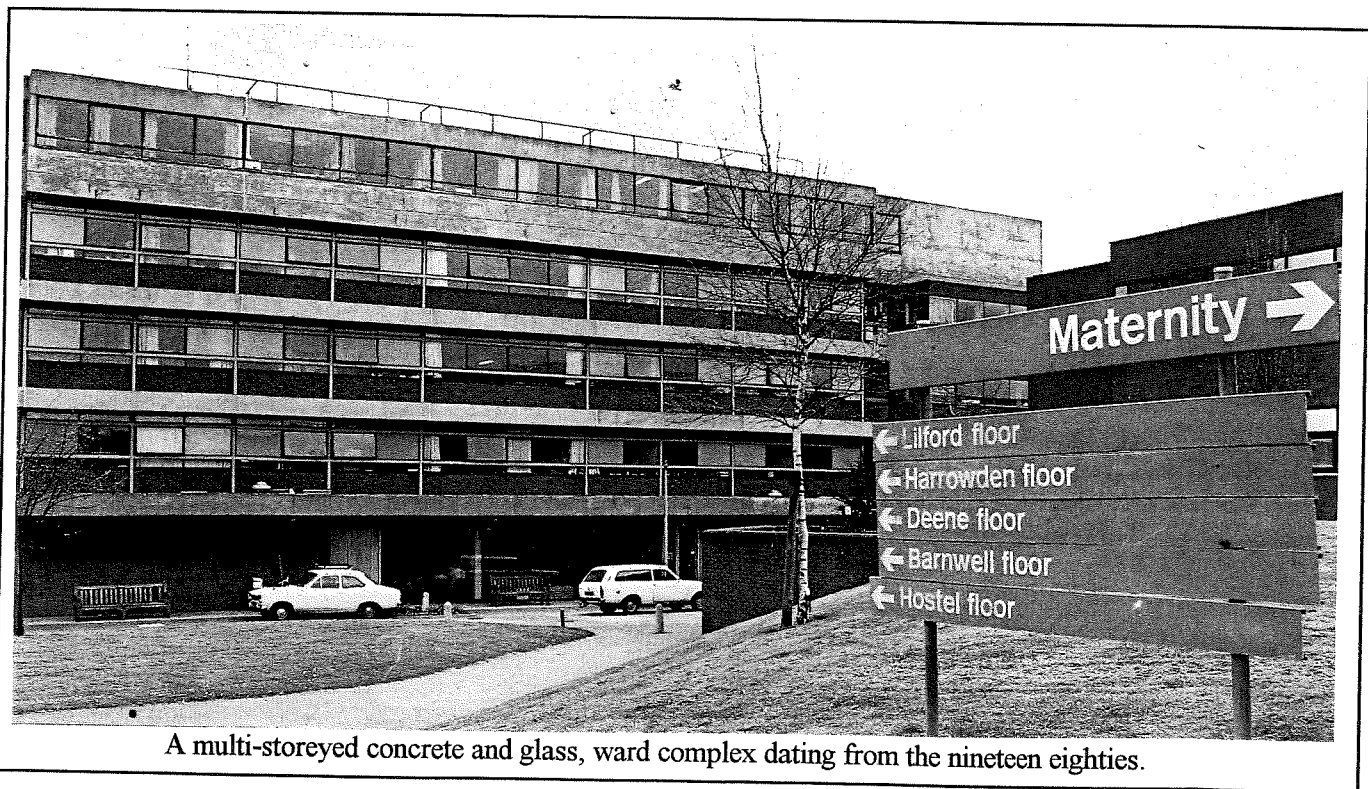
Innovation and Expansion



The Post Graduate Medical Centre, opened in 1976 by H R H the Duchess of Gloucester who is pictured alongside Mr Hutchinson, Chairman of the Hospital trustees.



Staff from the Coronary care unit, photographed with a new ventilating machine, in November 1993.



A multi-storeyed concrete and glass, ward complex dating from the nineteen eighties.

Today, Kettering General Hospital employs 2,380 members of staff including 200 doctors. It cares for approximately 50,000 patients per annum through its Accident and Emergency Department, treats 55,000 patients on an in-patient or day case basis and cares for in excess of 180,000 patients each year through its Outpatient Department.