



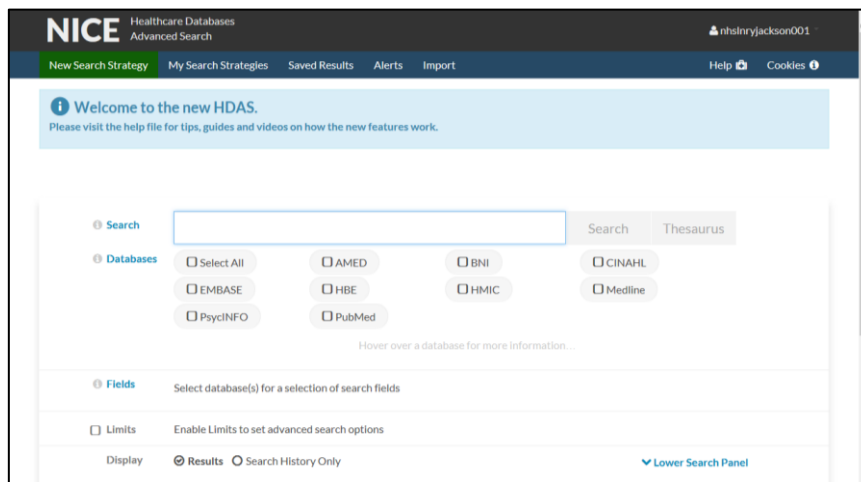
# RESOURCE & SERVICE NEWS & UPDATES

October 2016

## NICE Evidence Search – HDAS **redesign**

Help materials to support the launch of new HDAS service are now available.

- [HDAS quick reference guide](#)
- [HDAS full user guide](#)
- [HDAS key changes \(old to new\)](#)
- [HDAS video demonstrations of key tasks and features](#)



Advice on managing your migrated searches:

All saved searches and alerts set up from 2008 onwards in old HDAS have been migrated to the new system and will be available to users.

When you log in you will see an Import link at the top of the page, next to Saved Results and Alerts:

- click on the Import link and you will see a drop-down list of years
- select a year, and then you will see the list of your saved searches and alerts from that year
- select the ones that you want to import.

Things you should be aware of:

1. Migration may take some time, so please set some time aside to let this run. This will depend on how many saved searches and results you choose to bring across.
2. Only bring across the searches you need
3. You will need to go into your searches and run them in the new system.
4. Alerts will be on the final line of the strategy only. You will have to go into each strategy to change this if you want alerts on other lines within a strategy.
5. Alerts will continue to be sent from the old HDAS while users transition to the new HDAS, which may lead to duplication of alerts to users during November for some recipients.

Please note: some of the rules in new HDAS differ to those in old HDAS. These are explained in the HDAS key changes document available in the help package described above. For example, rows that have run on different databases cannot be combined in the new HDAS – whereas they could in the old. This feature was synthesized in the old version of HDAS, meaning that results were a representation rather than an accurate combination. Similarly, it is not possible in the new HDAS to combine rows that have limits applied.

In cases like these the affected search line will show a syntax error in the place where the error arises. The syntax checker will prompt users to make the required changes and update the line in new HDAS.

**Cont.....**

## Quiet Study/Private 1-2-1 Conversation Rooms

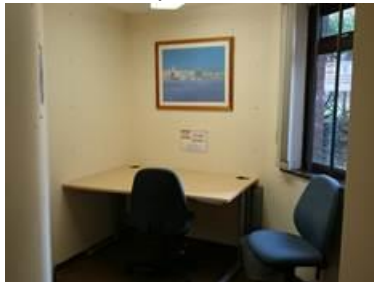
As you may be aware due to the area being required for other Trust purposes we have moved the Library IT Suite (18 computers), from the first floor of PWEC to the (previously known as) 'Quiet Study' room on the ground floor in the main library area.

To ensure we are still able to provide a 'quiet study' area two small rooms which have a capacity for 2 persons each (1 person usage for study purposes), have now been set up.

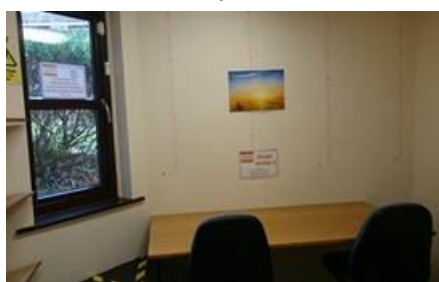
These rooms are available to book, 09:00-16:30, for a maximum of 2-hours at a time, for 'quiet study' or private 1-2-1 conversation purposes. Please book via the Library - by emailing [library.index@kqh.nhs.uk](mailto:library.index@kqh.nhs.uk), phoning x2862 or call in and speak to a member of the library team.

Please note: - Computer use is **not** provided. 'Public Wi-Fi' is accessible but has a low signal.

Study Room 1



Study Room 2



## Book Sale Event – THE BOOK PEOPLE



'Book Events' by 'The Book People' – will be here in the Library, comfy seating area on – **Tuesday 1<sup>st</sup> November, 10am – 2pm**. A list of titles they should be bringing will be circulated nearer the time.

The book sale visits after the 1<sup>st</sup> November one will be Wednesday 30<sup>th</sup> November and Wednesday 14<sup>th</sup> December.

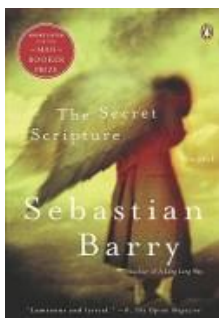
## Health Matters Displays

Please call in to view and pick up some leaflets. Timetable of displays for the next few months: -

- October 'Back Care' - to tie in with [BackCare Awareness Week](#).
- November 'Men's Health' - to tie in with [Movember](#)
- December 'Women's Health' - [Women's Health NHS](#)

## Book Club

The next meeting of the KGH Book Club will be on: – Wed 2nd November, 1-1.45pm in The Zone. We will be sharing: -



### **The secret scripture** by **Sebastian Barry**

'Roseanne McNulty is almost the last denizen of a soon-to-be demolished asylum. No one knows how old she is, and no one can remember why she was committed in the first place. She knows, however, and tells her story to a manuscript which she keeps hidden.

'An astonishing story, told with sadness and grace, full of gleaming images ... [the book's] achievement – the rich, enduring voice of Roseanne – is remarkable.' (*The Times*)

'This is a powerfully poetic individual epic that illuminates the history of a 'country of cupboards, every one with a skeleton in it'. ('*Sunday Telegraph*)

Please come and join us for a chat about this book ...or just books in general.

Please view the 'Book Club' page on our website – <http://kqhlibrary.koha-ptfs.co.uk/book-club/>

**Cont.....**

## Items recently added to the KGH Library Catalogue



To view lists of new items added to our catalogue please visit our website page - <http://kghlibrary.koha-ptfs.co.uk/items-added-to-kgh-library-catalogue/>.

## KnowledgeShare



This is a currently awareness service that matches your interests to documents and articles that have been added to the system by NHS librarians. The results/matches are then emailed to you once a fortnight. If you are interested in joining up to this service please view our website page –

<http://kghlibrary.koha-ptfs.co.uk/our-new-current-awarenessalerting-service-knowledgeshare/>

## eLearning for Health



Now available via your NHS OpenAthens login – please see attached for a list of available programmes. Please note that these do not replace any Trust training programmes.

## Used/Withdrawn Books For Sale

We still have some 'Exam' titles available. We have now moved some unsold titles (Surgery, Obs & Gynae, Pregnancy/Child birth) to the 'Free to a good home' table by the big window in the library.

### KGH Knowledge & Library Service

Library staffed opening hours: Mo-Fr 9:00-16:45

 [Library Service, PWEC, KGH](mailto:library.index@kgh.nhs.uk)

 01536 492862

 [library.index@kgh.nhs.uk](mailto:library.index@kgh.nhs.uk)